

WinTV-HVR-3000 Quick Installation Guide for Windows XP

© 2006 Hauppauge Computer Works - QI-WINTV-HVR3000-V1.0-ENG - 2006/06/22

Hauppauge Computer Works, Ltd.
10 Borough High Street
Bank Chambers
London, UK, SE1 9QQ
www.hauppauge.co.uk

Tech Support: (+44) 0207 378 0202
Telephone: (+44) 0207 378 1997
Fax: (+44) 0207 357 9171

Hauppauge Computer Works, Inc.
91 Cabot Court
Hauppauge, NY 11788
www.hauppauge.com

Tech Support: (+1) 631 434 3197
Telephone: (+1) 631 434 1600
Fax: (+1) 631 434 3198

Hauppauge Digital Asia, Pte. Ltd.
Blk 1093, Lower Delta Road #04-05
Tiong Bahru Industrial Estate
Singapore 169204
www.hauppauge.com.sg

Tech Support: (+65) 276 4412
Telephone: (+65) 276 9163
Fax: (+65) 276 9167

1. Contents of the WinTV-HVR-package

- WinTV-HVR-3000 - PCI-board
- Remote control transmitter with 2 AAA batteries
- Remote control receiver with velcro dot fastener
- FM Radio antenna
- S-Video/Composite Adapter
- Installation CD-ROM with:
 - WinTV2000 application with SoftPVR™
 - WinTV-Scheduler
 - Remote Control application
 - WinTV-Radio application
 - WinTV Utilities
 - VTPlus teletext application



Page 1

7. Installing the Remote Control software

The WinTV2000's remote control software is installed automatically during the installation of the WinTV applications.

You will see the WinTV Remote icon in the Device Tray. The installation will add a shortcut to IR.EXE to the Startup group, so that IR.EXE is loaded every time after Windows has booted.

If you need to restart the remote control, select **Restart IR** from the **Start \ All Program Files \ WinTV** directory.

Please ensure the following before trying to use this option:

- Infrared Remote control - Has batteries inserted
 - Infrared-Receiver, is fully connected to the IR socket of the WinTV-Card
 - Infrared software is started - The IR icon is on the start bar
- To start WinTV press the **GO** button and a menu will appear. Use the scroll up and down button to select either WinTV2000 or WinTV32 and press **OK** to select.

Button of the Remote control

Button	Function
Go:	Open WinTV-Remote Menu
Power:	WinTV turn on/off
TV:	Full screen TV Window on/off
Videos:	No Function
Music:	No Function
Pictures:	No Function
Guide:	No Function
Radio:	Start and Stop Radio Application
OK:	Confirm selection
Back/Exit:	Exit the Record/Pause; Select previous channel
Menu:	Will show the Task manager window for active screen
Vol:	Volume up/down
Prev. Ch:	Select the previous channel
Mute:	Sound on/off
Ch:	Select the next channel
REC:	Start a recording
Stop:	Stop a recording; Exit pause mode
<<:	Rewind
Play:	Start playing
>>:	Forward
Pause:	Start Pause-Mode (Timeshift)
Skip:	Skip ahead (x2/x 4/x8)
0-9:	Channel number
text (*):	Start VTPlus teletext application



Page 5

▶ Play
Clicking the **Play** button will playback from disk the last video file created. When playing a video, you can rewind, fast forward, replay 10 sec or skip forward 10 sec using the buttons on the control bar.

⏸ Pause
Clicking the **Pause** button while Playing will pause your audio/video.

⏮ Rewind button
Clicking the **Rewind** button will play the video file in reverse. Clicking the **Rewind** button again will continue the playing of the video.

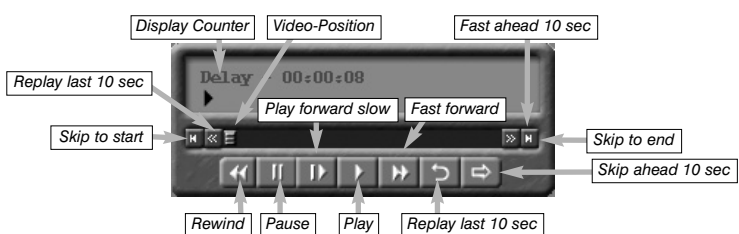
⏭ Fast forward button
Clicking the **Fast Forward** button one time will fast forward your video at 2X speed. Clicking the **Fast Forward** button two times will fast forward your video at 8X speed. Clicking the button again will continue playing back at normal speed.

⏪ Slow motion button
Clicking the **Slow Motion** button during playback will cause the video to play in slow motion. Clicking the **Slow Motion** button again will return the video to normal playback speed.

📁 File button
Clicking the **File** button opens the **File** menu. The last file recorded is listed in the **File** name box. In the **File** menu you can:

- Rename your recorded video file:** To rename a video file, find the file you would like to rename, highlight it with your mouse, and click and hold the right mouse button. Go down to **Rename** and then you can type in a new name. Remember: you must keep the MPG extension on the file.
- Play a video file previously recorded:** Find the file you would like to play, highlight it with your mouse (one click of the mouse button) and click **Open**. Then click the **Play** button.
- Delete recorded video files which you no longer want:** Click your right mouse button on the video file once, go down the menu and click **Delete**.

Pause mode
The pause mode allow you to pause the Live TV picture and allows you to use the **TimeShift** function to rewind and fast forward the TV. Clicking the **Pause** button or **OTR** button on the WinTV2000 application starts the **Pause mode**. The **Pause** Menu will drop down.



Page 9

2. Installing the WinTV-HVR board

To install, switch off the computer and remove the computer cover. The manufacturer of your PC supplies instructions on removing the PC cover.

Note: Your PC could be damaged by electrostatic discharge. Avoid this by contacting the earthed chassis of your PC, before you open it or touch the PCI card.

- Locate a free PCI slot (a short white slot). Unscrew and remove the meta cover plate which covers the back of the empty slot.
- Plug the WinTV-HVR board into the PCI slot, and screw the WinTV-HVR metal cover plate to the PC.

3. Connections of the WinTV-HVR-3000 board

With the HVR you can watch and record analog TV, DVB-Terrestrial and DVB-Satellite channels. You can also connect sources via the composite and S-Video inputs and listen to FM Radio as well.

You can now connect the leads provided to the WinTV-HVR-3000 in the following order.

FM	FM Radio-Antenna
TV	TV-Antenna
SAT	SAT-Cable from the LNB of your satellite dish
S-VIDEO IN	S-Video-Input *
LINE IN	Stereo-Audio-Input, from the output of your source
IR	Input for the Infra-red-Sensor

Note: for using a **RCA Yellow Phono composite input** you must use the supplied **S-Video to composite adapter**.

4. WinTV-HVR-3000 DVB reception advice

DVB-T
Please ensure that you have a suitable TV aerial connected to the WinTV card. You should then ensure you are located in an area that supports Digital Terrestrial TV by visiting: www.dtg.org.uk/retailer/coverage.html and entering your post code. If your area does have digital Terrestrial TV coverage, please check your TV antenna as most antenna's that are over 8 years old may not support the Digital Terrestrial TV broadcasts and you may need to update yours to a 'Wideband or Highgain' antenna.

DVB-S
Please ensure that your satellite dish is correctly aligned and the Sat cable is connecty directly from the LNB and not via a set top box.

Page 2

8. WinTV@2000

To start the WinTV2000 application double click on the WinTV2000 icon.

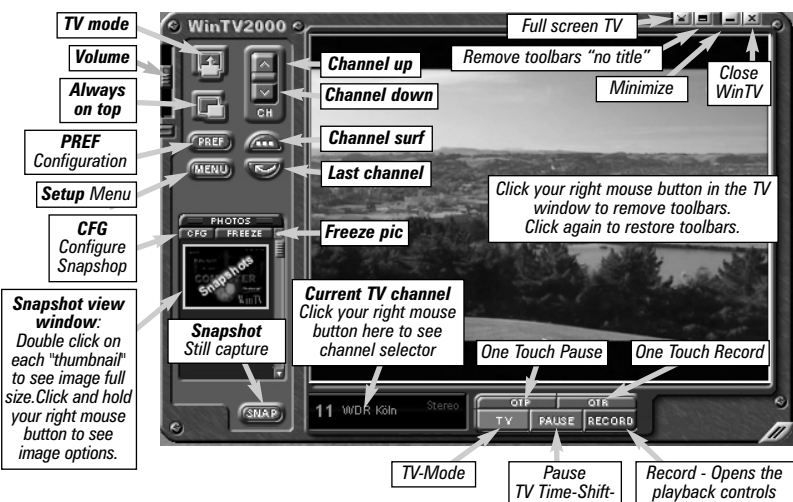
A message will appear asking you to scan for tuner channels now; please ensure that the TV antenna is connected, click **YES**.

Click on the **Analog/Digital Config** button and select your country (**United Kingdom**), source (Antenna) and video format (**Pal-BGHIDK**).

Click the **Scan** button to search for channels.

To scan for satellite channels click on the **Config** and **Advanced** buttons. You will now be able to select your DiSEqC support level, which for single LNB satellite installation will be "No". Under the Satellite list select the satellite that your dish is receiving signal from (**UK 0282 ASTRA 2A,2B,2D (28.2E)**).

Click the **Scan** button to search for channels and click **Close** when complete.



Page 6

TV Mode

When you click the **Full screen TV** button, TV will appear full screen on your PC monitor. When finished watching TV full screen, click your right mouse button in the TV window. If you see video with a black box around it, click the **Pref** button then click **TV mode** tab. Check the box which says "Allow resolution change".

Pause Buffer

The **Pause Buffer** is space on your hard disk where video is stored during the **Pause** mode. The maximum amount of time which your TV program can be delayed is dependent upon how much storage space you have set for the **Pause** buffer.

Pause
Clicking the **Pause** button or **OTR** button causes WinTV2000 to start recording into WinTV's **Replay Buffer**. It takes about 10 seconds for the **Replay Buffer** to be initialized and for **Pause** to become effective.

Unclicking the **Pause** button will cause the audio/video program to start playing from the point where the button was originally clicked. Most WinTV2000 functions are active while in the **Pause** or **Pause** Live mode. For example, you can change volume, resize the TV window, go into "no-title mode", etc.

While in **Pause** mode, the **Video Position** bar shows the amount of the **Replay Buffer** which is filled with video. For example, if the **Video Position** indicator shows halfway, it means that half of the **Replay Buffer** is filled. If you find you cannot **Pause** as many minutes as you would like, increase the size of the **Replay Buffer**.

While in **Pause** mode, the A/V stream is always saved in the **Replay Buffer**. To stop saving the A/V stream in the **Replay Buffer**, you must exit the **Pause** mode by clicking **TV mode**.

Replay button

While in the **Pause** mode, hitting the **Replay** button acts like the **Instant Replay** you see on TV broadcast sporting events: the audio/video goes back in time and you repeat what you have previously seen. Each click of the **Replay** button causes audio/video to go back 10 seconds. For example, if you want to repeat the audio/video you saw 10 seconds ago, you would click the **Replay** button once. If you want to see the video you saw one minute ago, you would need to click the **Replay** button six times.

For extended replay times, you might find it more convenient to grab the **Video Position** indicator control bar and move it to the left. Once you let the control bar go, audio/video starts to play (it might take a few seconds for the WinTV2000 application to start playing).

You might have to move the **Video Position** indicator to the left and right to find the desired spot to start replaying audio/video.

While **Replaying**, your audio/video program continues to be recorded in the **Replay Buffer**. Therefore, if you have clicked the **Replay** button 3 times (so that you are replaying the audio/video seen 30 seconds ago), the video you see in the WinTV window will be 30 seconds behind the "live" audio/video program.

Skip ahead button

Clicking the **Skip** button will skip the video ahead 10 seconds.

Rewind button

Clicking the **Rewind** button while playing video will rewind the recorded video. Clicking the **Rewind** button again will continue the playing.

Page 10

5. Install the WinTV-HVR Windows XP driver

Note: You may need to disable your antivirus programs during the installation only.

Start your PC. When it is completely booted, the **Add New Hardware Wizard** will appear. Insert the **Hauppauge Installation CD-ROM** into your **CD-ROM** drive. Click **Next**.

Select **Search for the best driver for your device (Recommended)**. Click **Next**.

Note: If you see a **Hardware Installation box** that mentions that the driver is not digitally signed, click the "Continue anyway" button to continue the installation.

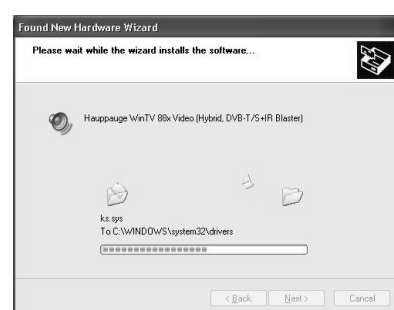
Once the driver components are installed, click the **Finish** button.

You can check to see if the driver has been installed correctly. Click on **Start / Settings / Control Panel / System / Hardware / Device Manager**.

If you then click on the **Sound Video and Game Controllers** section you should see the eight WinTV-HVR components.

If any of them have a yellow exclamation mark, follow this procedure:

- Close **Device Manager**
- On the **Hauppauge Installation CD-ROM** double click on the file called "HCWclear.exe" and select the last 2 options and click on **OK**.
- Once the black screen has closed down, re-start the computer and continue from Step 5 above.



Page 3

"Always on top" Mode

Will always be visible on your Windows desktop on top any applications. To turn on, click the **Always on top** button. It will turn green. To turn off, click this button again. A convenient way to use **Always-on-top** is to make the TV window in the no-title mode small, and to make the TV window in the title mode larger. Then you can switch from a small window to a larger one by clicking the right mouse button.

Changing channels

You can change channels by using the **Channel Up** or **Channel Down** buttons on the WinTV2000. You can type a channel number (for example: 27) and WinTV2000 will tune to that channel. If the entered channel does not exist, you will see a black window.

You can also type letters (for example: BBC) to access to the list of the channels including these letters.

Menu Button

Click the **Menu** button to open the TV setup menu. Here is the main control bar for TV channels, and duplicate controls for other functions:

Suite-Manager: Configure the TV tuner (scanning, naming, channel pre set, etc) and setting up favourite channel lists.

Configuration: Duplicate configuration menus for colour, audio, MPEG settings (except DVB TV), etc.

View: For settings (except DVB TV) an exact TV window size: 320x240, 640x480 etc.

Pref button

View: These setting mainly control the Screen display for the TV channels and Audio volume. This menu will also allow you to enable close caption (if supported in your system configuration), plus controls for the **Toolbar** mode (**Title** mode), **NoToolbar** mode (**No Title**) and **Full Screen** (**TV mode**).

Movies: Here is where you configure the video and audio setting for **SoftPVR**. You can set the movie record directory (**DVCR Record File Path**), the **MPEG Quality** settings, and the **Audio** settings.

Snapshot: Set the size of your captured images, plus single or two field captures for capturing motion or still image video.

Audio: Your audio settings are configured here.

Colour: Adjust the colour of your TV picture here (analogue TV).

Keyboard shortcuts

Sound up	- Page Up	Ctrl+M	- Mute on/off
Sound down	- Page Down	ALT+M	- Re-size TV menu
Plus (+)	- Channel Up	0-9	- Channel number
Minus (-)	- Channel Down	F1	- Launch Help
Ctrl+T	- Frame TV	SHIFT+F1	- Online Help
Ctrl+P	- Frame Print	Space bar	- Take a Snapshot
Ctrl+F	- Still image		

Page 7

Slow motion

Clicking the **Slow Motion** button while playing video will play in **Slow Motion**. Clicking the **Slow Motion** button again, will continue playing normally.

Fast forward button

Clicking the **Fast Forward** button one time will fast forward your video at 2X speed. Clicking the **Fast Forward** button two times will fast forward your video at 8X speed.

9. Using an external source

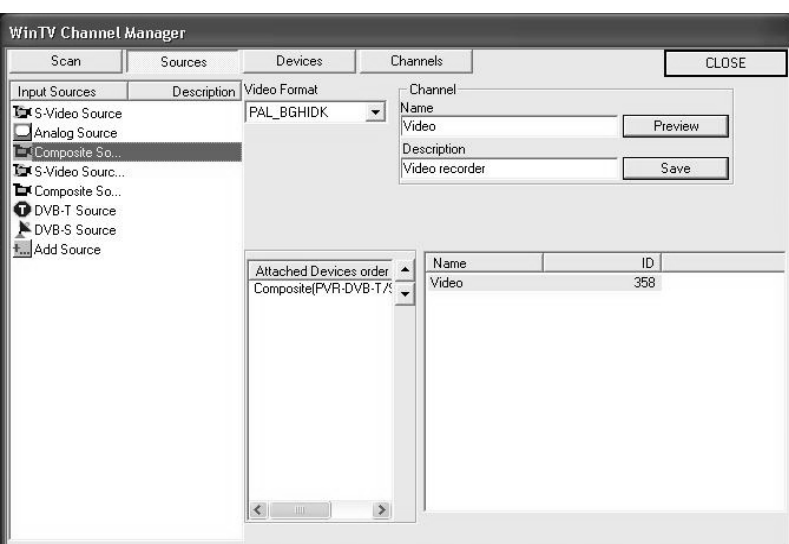
If you are using an external source like a Hi-8 Camcorder, Video recorder etc, then you will need to connect via the **S-Video/Composite** or the **Video** picture and **Line-Input** for the sound.

If you are using a **Scart** to composite (**RCA Yellow phono**) lead, please ensure that the signal is being sent in the correct direction from the **Scart** lead to the phono connection. A **scart** to **S-Video** lead, in most cases, will not work correctly and will only give you a black and white picture.

Configuring an external source in WinTV2000

In the WinTV2000 application click the **Menu**, **source manager** and **sources**. To add the **S-Video** or **Composite** channel highlight the entry and then select the **Video** Format from the drop down list.

Note: **Pal BGHIDK** is the commonly used format in Europe.



Type in a channel "Name" e.g. **Video** and a **Description** and then click on "Save" the channel will now be added and if you click on **Close** you will be returned back to the main TV viewing window.

Page 11

6. WinTV Software Installation

To start the WinTV2000 software installation, click **Start / Run** then type your **CD-ROM drive letter** (for example: D:) and then **Setup.exe**. Select your language and click **Next**.

It is recommended to leave the default components ticked and select **Install** and follow the on screen instructions.



Once the installation is complete the WinTV2000 Icon will appear on the desktop which will allow you to run **Hauppauge WinTV**.

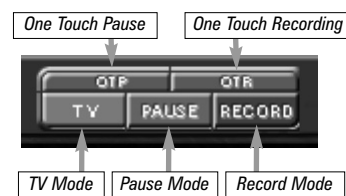
The 7 day **Electronic Program Guide (EPG)** for **DVB-T** can be downloaded and installed from the www.hauppauge.co.uk website. See website for installation instructions.

Once downloaded double click on the **DVB_T_EPGService_Setup.exe** program and follow the on screen instructions.

Page 4

Record-, Pause- and TV-Mode

There are three buttons to control the watching, recording and pausing of TV. Clicking on the **Pause** button will cause the **Pause** menu to roll down from the WinTV2000 application, while clicking on the **Record** button will cause the **Record** menu to roll down.

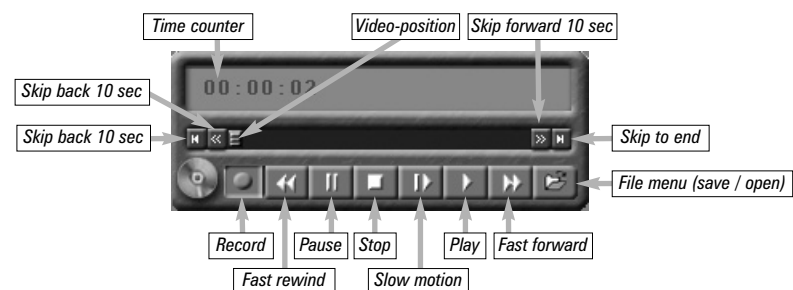


Clicking on the "OTP" (**One-Touch-Pause**) prepares WinTV2000 for the **Pause-Mode** mode (see below).

Clicking on the "OTR" (**One-Touch-Record**) prepares WinTV2000 for recording. If you press the "OTR" once it will record for 15 minutes duration, if you immediately press again it will add another 15 minutes (so in total 30 mins).

Record Mode

Click on the **Record** button or the **OTR** button on the WinTV2000 application to open the **Record** and **Playback** control bar.



Time counter

The time is specified in a **Hour:Minute:Second** format.

Record

Clicking the **Record** button will automatically generate a file name and start recording your audio/video program.

Functions:

- When recording TV the record button will be depressed
- A time counter will be shown indicating the length of time of the recording

If you click **Stop** the time counter will revert back to 00:00:00

Stop

Clicking the **Stop** button will stop the video you are recording or playing back.

Page 8

10. WinTV-Scheduler

WinTV-Scheduler allows you to schedule the recording of TV shows. **WinTV-Scheduler**, once it is set, can be closed, and the **WinTV** application will "wake up" at the desired time and tuned to the desired channel. After installation, **WinTV-Scheduler** can be found by going to **Start / Program Files / Hauppauge WinTV**.

WinTV-Scheduler works by using the **Windows Task Scheduler** to launch **WinTV** at the chosen time. **WinTV-Scheduler** sets up a command line in **Task Scheduler** to run **WinTV2000**, specifying a TV channel and a length of time to record.

To set up an event for timed watching or recording, run **WinTV-Scheduler** and click on the **Add Program**.

Note: You cannot access the **Wing** settings until you have purchased the **optional transcoder software**, for more information see www.hauppauge.com/wing. Please refer to the **WingSE** guide for information on using the **Wing** settings.

The items that need to be set for each event are:

- Time to Begin Program:** set to the desired start time. The default time is about 3 minutes from the current time. Click on the hour to set the hour, the minute to set the minute and the second (if you feel this is necessary) to set the second to start the program.



11. WinTV-Radio (for radio FM)

Please ensure that the FM Radio antenna is connected to the FM connection on the back of the WinTV-HVR.

Note: DVB-T and DVB-S Radio stations will be listed in the TV channel list in the WinTV2000 application.

To start the WinTV-Radio, click the **Start / Programs / Hauppauge WinTV** and the **"Radio"** application shortcut.



Using the WinTV-Radio buttons

Volume: The audio volume is adjusted by setting the Windows volume Line In.

Tune: Fine tune the current radio channels.

Seek: Search for the next active FM radio channel.

Mem: Sets an FM radio channel preset. To assign the current station to a preset, click on MEM and then on one of the Preset buttons (1-30).

Mute: Turns off the sound.

Mono: Force mono reception. Default is stereo.

Scan: Searches for new stations until you click "Stop". Click the Right mouse button anywhere on the WinTV-Radio window to set the Scan mode.

Min: Minimizes the WinTV-Radio window.

CD: Starts your systems Audio CD-player for playing back Audio-CD's. Closes the radio application and starts the WinTV application.

OFF: Closes the radio application.

1 to 10: Preset 1 - 30 Stations list (1..30).

Mem button now saves existing preset to new preset number or swaps with existing: When saving presets if the target preset already exists and the current channel is also a preset then the two presets are swapped allowing the user to reorder the preset list. If the user saves a current preset to a new empty preset the the original preset is moved to the new location. If the target preset exists and the current station is NOT an existing preset then the user is prompted before destroying the existing preset.

Supports 30 User Defined Presets: Each Preset button holds up to 3 presets each. Press the button to go to the next preset. The Mem button cycles through FM1, FM2, and FM3 bands to specify where to save a new preset.

User defined display names for Presets:

When the radio is tuned to a preset the user can assign a name by clicking the mouse on the frequency display and typing in a name that

does not begin with a number. You can use leading spaces to center the name in the display. Hit Enter/Return to finish.

Minimize to tray; left click restores app, right click accesses context menu

Content-Menu

If you click and hold the right hand mouse button on the Radio window then a menu will appear.

Keyboard shortcuts

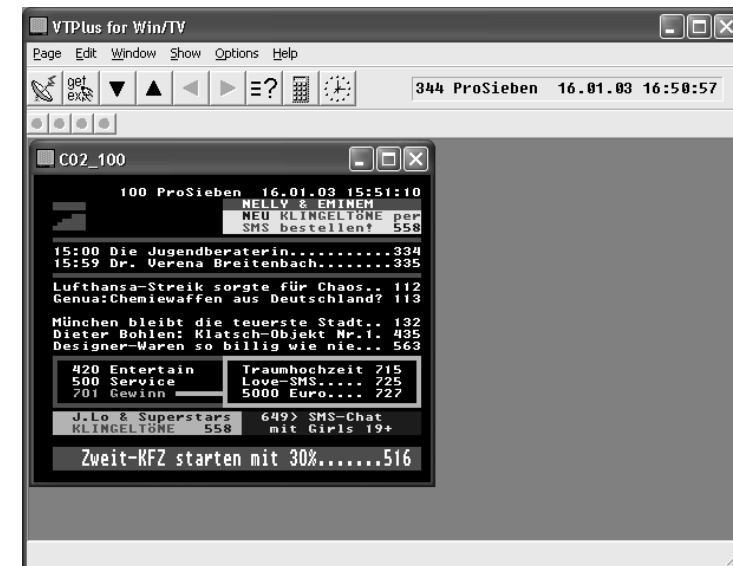
Key	Function
F1-F10	Preset 1-10
Num 0,1-9	Preset 1-10
F11/12	Tune Up/Down as defined by Remote Tuning Mode
INS	Add current station as preset if not already defined as preset
DEL	Remove existing Preset
Pg Up/Dn	Volume Up/Down
+/-	Tune Up/Down
Home	Seek Up
End	Seek Down
Space	Scan to next Preset or Station as defined in Scan Mode
O	Toggle Mono/Stereo Mode
M	Toggle Mute
N	Minimize Radio
T	Goto TV
C	Goto CD Player
E	Exit Radio (OFF)
S	Toggle Scan Mode
R	Toggle Mem state

12. VTPlus application

VTPlus for WinTV-HVR is a Teletext software application which is available on the analogue and DVB-S (not DVB-T) channels of the HVR. VTPlus allows you to view multiple teletext pages, save or print teletext pages and create Dynamic Data Links so that teletext data can be used in other applications. The WinTV application does not have to be active while the VTPlus teletext application is running.

Please ensure that you have already scanned in your TV channels before starting VTPlus.

To start the VTPlus application click on the **Start / All Programs / VTPlus for WinTV**. Please refer to the online Help menu in the application for instructions.



13. WinTV Command line Parameter

Command line options for the WinTV32/WinTV2000 Application

To start the WinTV application with a specific command line option you need to click on: **Start / Run** and type in:

"C:\Program\WinTV\WINTV2K.EXE"

You can now select some of the following options:

```
NoSplashScreen = -nss
WinTV32Mode = -nc
WinTV2000Mode = -cg
NoTipOfDay = -ntod
Suite = -sSuiteName
Channel = -cChannelNumber
WindowMode = -mMode ('tv', 'NoTitle', 'Title', or 'Off' (all caseless)
(Note: 'Off' will cause an existing instance of the WinTV app to exit)
```

7 day EPG (for DVB-T)

You should see an icon close to the Windows clock. You will reach the menus of the 7 day EPG by a right click on this icon. For more information on its operation, visit www.hauppauge.co.uk



14. Troubleshooting

To uninstall the Driver and Software

To uninstall the software simply run the hcwclear.exe off theHauppauge installation CD-ROM and select the last 1 option and the entry "search all INF files etc". If you now select "OK" a black screen will briefly appear and once it has disappeared the software will be removed. If you now re-start the computer you will be at Step 5 on page 3 of this document and can now re-install the software.

"Error code 10" during installation

This is caused by a failure to load the WinTV-HVR-3000 drivers. Uninstall the software (as above) and then follow the instructions from page 3. If this still gives you an error message move the WinTV-HVR-3000 to a different PCI slot and re-install the drivers again.

Only some channels are found during DVB-T channel scan

Ensure that your antenna is capable of receiving Digital terrestrial transmission (Most rooftop/loft antenna under 8 years old may work).

You can enter your postcode at this website address: www.dtg.org.uk/retailer/coverage.html as this will show you what services are available in your area.

You can then enter your postcode at this website: www.bbc.co.uk/reception/transmitters/today.shtml to see if there is any engineering work being carried out on your transmitter as this could affect the reception of some channels.

TV display has problems (e.g. no picture but with sound or blurred image)

With the WinTV2000 application closed click on the WinTV program group (Start / Programs / Hauppauge WinTV) there is a utility called "Primary". Set it to one of the other options and then close using the "X" and restart the TV application. If the problem remains try another option.

FCC Statement

Radio Interference Statement:

The WinTV boards have been tested and found to comply with the limits for a Class B digital device, pursuant to part 15 of the FCC Rules. These limits are designed to provide reasonable protection against harmful interference in a residential installation. This equipment generates, uses, and can radiate radio frequency energy and cause harmful interference to radio communications. However, there is no guarantee that interference will not occur in a particular installation. If this equipment does cause harmful interference to radio or television reception, which can be determined by turning the equipment off and on, the user is encouraged to try to correct the interference by one or more of the following measures:

- reorient or relocate the receiving antenna.
- increase the separation between the equipment and receiver.
- connect the equipment into an outlet on a circuit different from that to which the receiver is connected.
- consult the dealer or an experienced radio/TV technician for help.

FCC ID: H90WINTV

CAUTION: Changes or modifications not expressly approved by the party responsible for compliance to the FCC Rules could void the user's authority to operate the equipment.

CE Statement: This equipment has been tested and complies with EN 55013, EN 55020 and IEC 801-3 part 3 standards.

Waste Electrical and Electronic Equipment (WEEE)

The device may not be disposed of with household rubbish. This appliance is labeled in accordance with European Directive 2002/96/EG concerning used electrical and electronic appliances (Waste Electrical and Electronic Equipment - WEEE). The guideline determines the framework for the return and recycling of used appliances as applicable throughout the EU. To return your used device, please use the return and collection systems available to you.